

8

7

6

5

4

3

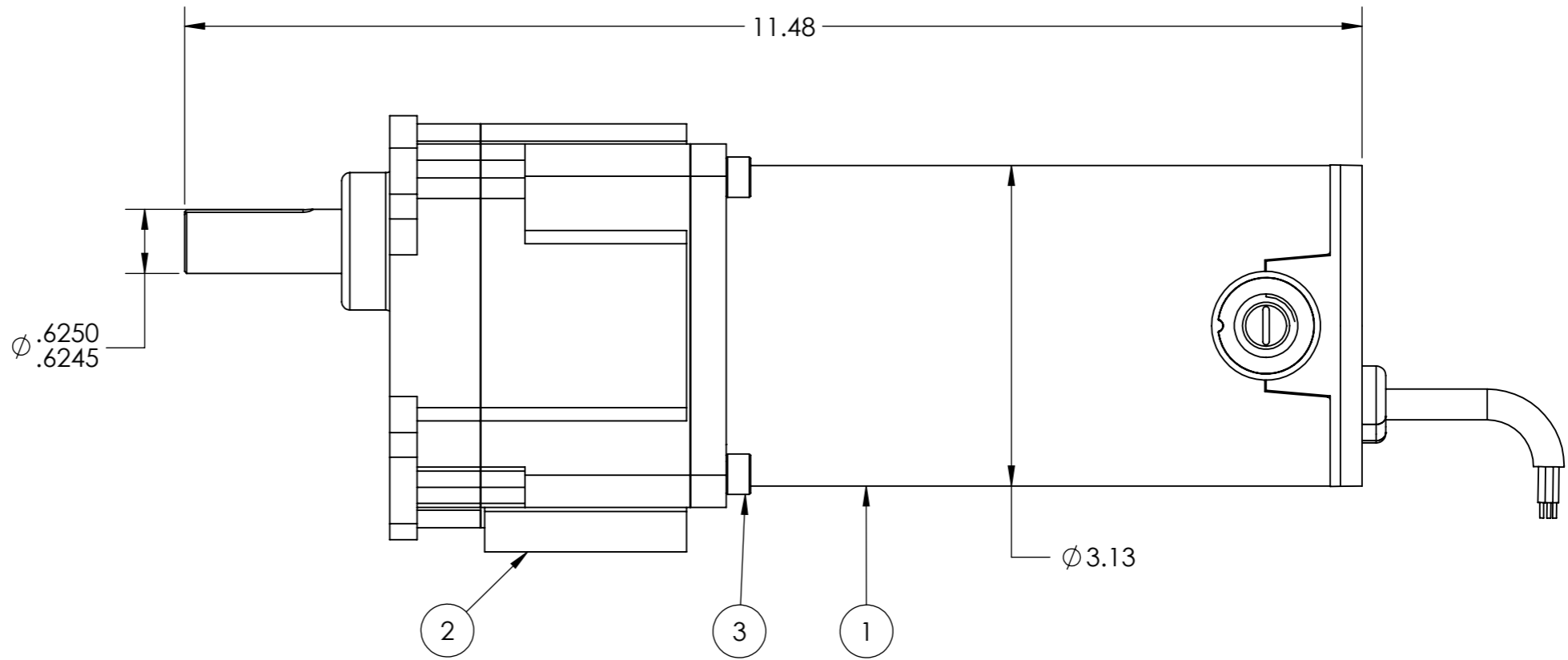
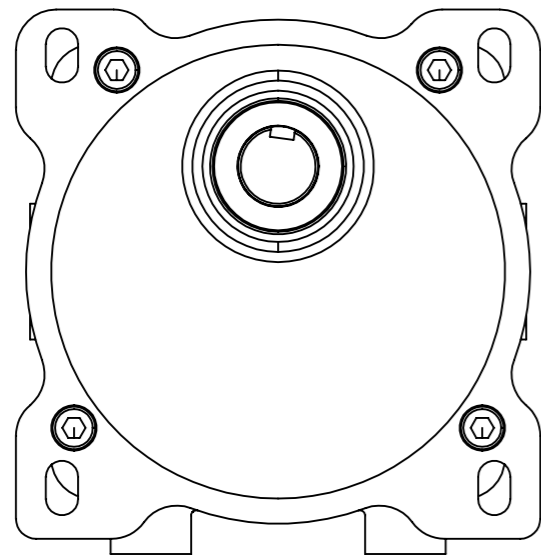
2

1

NOTES:

- 1. VOLTAGE: 90 V DC
- 2. OUTPUT SPEED: 500 RPM
- 3. CURRENT: 1.7 A
- 4. TORQUE: 15 IN-LB
- 5. GEAR RATIO: 5:1
- 6. INSULATION CLASS: F
- 7. HP: 0.13
- 8. DUTY: CONTINUOUS

REVISIONS			
REV.	DESCRIPTION	DATE	APPROVED
-	INITIAL DRAWING	5/20/2024	PK



ITEM NO.	PART NUMBER	DESCRIPTION	QTY.
3	15-0309	SOCKET HEAD CAP SCREW M6	4
2	71-0605	PARALLEL GEARBOX 5:1	1
1	7010	MOTOR ASSEMBLY	1

PARTS LIST



THIRD ANGLE PROJECTION  
 UNLESS OTHERWISE SPECIFIED  
 TOLERANCE:  
 .XXX ± .005  
 .XX ± .01  
 FRACTION ± 1/64  
 ANGLE ± 1°  
 125/  
 BREAK ALL SHARP CORNERS

ALL UNITS IN INCHES UNLESS OTHERWISE SPECIFIED		
IN ACCORDANCE WITH ASME Y14.5-2009		
PART NUMBER: GPP12540		
DESCRIPTION: 90V DC PARALLEL SHAFT GEARMOTOR		
MATERIAL: SEE BOM		
DATE: 5/20/2024	DRAWN BY: PK	CAGE CODE: 3RYR6
SIZE: A3	SCALE: 1:4	SHEET: 1/1

CONFIDENTIAL: THIS DATA IS PROPRIETARY TO MOTOR SPECIALTY, INC. AND MAY NOT BE REPRODUCED OR MADE AVAILABLE FOR DISTRIBUTION OR USE WITHOUT THE EXPRESS CONSENT OF MOTOR SPECIALTY, INC. AND WILL BE RETURNED UPON REQUEST.

8

7

6

5

4

3

2

1