

8

7

6

5

4

3

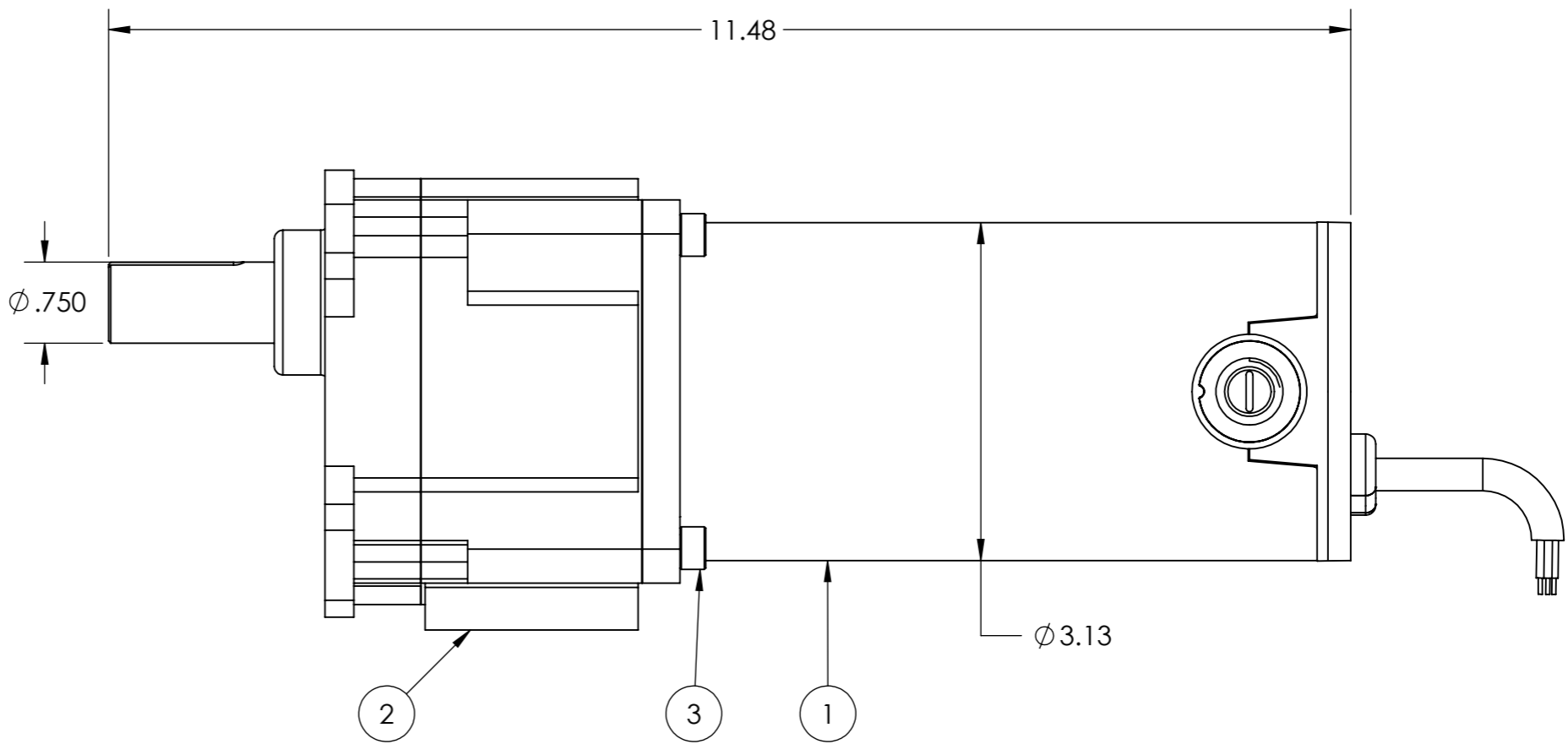
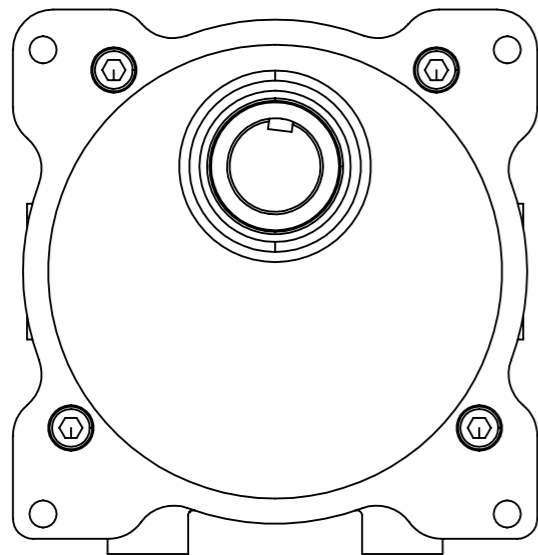
2

1

NOTES:

- 1. VOLTAGE: 90 V DC
- 2. OUTPUT SPEED: 500 RPM
- 3. CURRENT: 2.5 A
- 4. TORQUE: 25 IN-LB
- 5. GEAR RATIO: 5:1
- 6. INSULATION CLASS: F
- 7. HP: 0.25
- 8. DUTY: CONTINUOUS

REVISIONS			
REV.	DESCRIPTION	DATE	APPROVED
-	INITIAL DRAWING	5/20/2024	PK



ITEM NO.	PART NUMBER	DESCRIPTION	QTY.
3	15-0309	SOCKET HEAD CAP SCREW M6	4
2	71-0705	FST PARALLEL GEARBOX 5:1	1
1	7011	MOTOR ASSEMBLY	1

PARTS LIST

<p><b>MSI</b> MOTOR SPECIALTY INC. EST 1947</p>	<p>THIRD ANGLE PROJECTION</p> <p>UNLESS OTHERWISE SPECIFIED TOLERANCE: .XXX ± .005 .XX ± .01 FRACTION: 1/64 ANGLE: 1° 125/ BREAK ALL SHARP CORNERS</p>	ALL UNITS IN INCHES UNLESS OTHERWISE SPECIFIED		
		IN ACCORDANCE WITH ASME Y14.5-2009		
		PART NUMBER: GPP7450		
		DESCRIPTION: 90V DC PARALLEL SHAFT GEARMOTOR		
MATERIAL: SEE BOM				
DATE:	DRAWN BY:	CAGE CODE:		
5/20/2024	PK	3RYR6		
SIZE:	SCALE:	SHEET:		
A3	1:4	1/1		

CONFIDENTIAL: THIS DATA IS PROPRIETARY TO MOTOR SPECIALTY, INC. AND MAY NOT BE REPRODUCED OR MADE AVAILABLE FOR DISTRIBUTION OR USE WITHOUT THE EXPRESS CONSENT OF MOTOR SPECIALTY, INC. AND WILL BE RETURNED UPON REQUEST.

8

7

6

5

4

3

2

1